



# THORPE REALTY & AUCTION

## Roykota Legacy Estates

[www.RoykotaLegacyEstates.com](http://www.RoykotaLegacyEstates.com)

A beautiful and well groomed nine hole golf course lies adjacent to the property. The golf course is well managed and provides an excellent alternative to the lake recreation. Roy Lake is known for its excellent walleye, bass, pan fish, and pike fishing. Pheasant, deer, and waterfowl hunting are also popular sports in the surrounding area. The Roy Lake State Park also provides many recreation opportunities.

The lots that do not have lake frontage share the private lake access between lots 6 and 7. This is a rare opportunity to purchase premier lake lots on truly one of most beautiful lakes in Midwest.

### New List Prices

Lot 2A	\$138,550	
Lot 3A	\$138,550	
Lot 4	\$132,600	
Lot 5	\$124,100	
Lot 6	\$170,000	
Lot 7	\$148,750	
Lot 8	\$140,000 w/ Duplex	<b>SOLD</b>
Lot 9	\$ 7,500	<b>SOLD</b>
Lot 11	\$100,000	<b>SOLD</b>
Lot 12	\$ 60,000	
Lot 15	\$ 45,000	<b>Contract Pending</b>
Lot 16A	\$ 45,000	<b>Contract Pending</b>
Lot 17A	\$ 45,000	<b>Contract Pending</b>
Lot 18A	\$ 45,000	<b>SOLD</b>

For covenants and more information visit [www.RoykotaLegacyEstates.com](http://www.RoykotaLegacyEstates.com) or contact the listing brokers.

Jim Thorpe  
Cell: 605-216-7776

Peggy Thorpe  
Cell: 605-216-1309

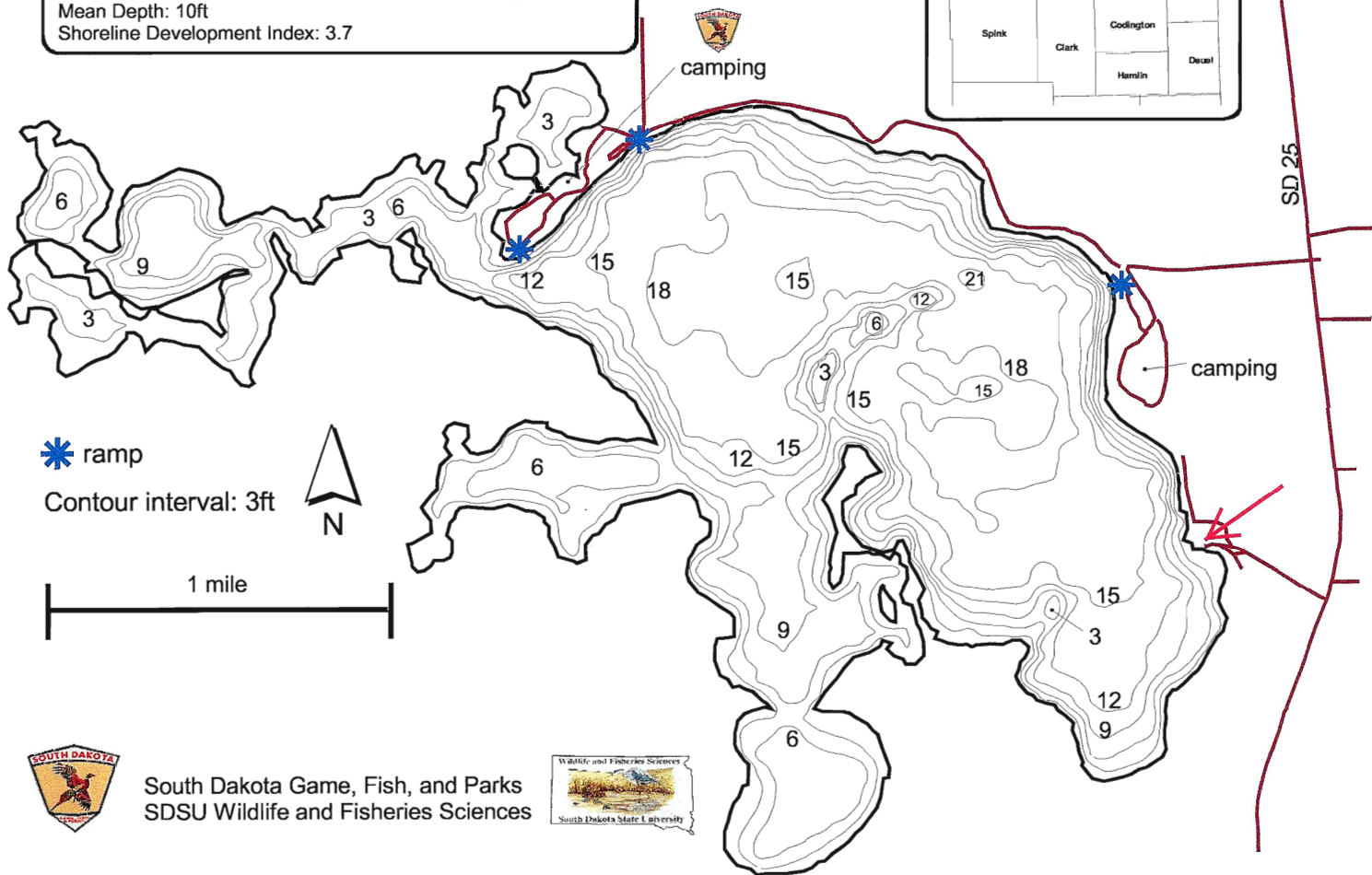
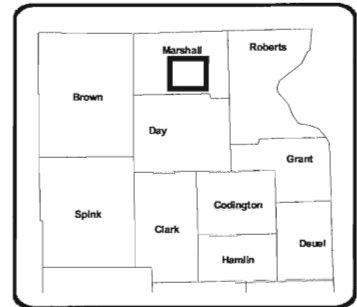
Office: (605) 225-7776 or Toll-free: 1-877-607-9871  
[www.ThorpeRealtyAuction.com](http://www.ThorpeRealtyAuction.com)

**Thorpe Realty & Auction, Inc.**  
1812 6<sup>th</sup> Ave SE Ste 2  
Aberdeen, SD 57401

# Roy Lake - Marshall county

Map Creation: November, 2002      Sonar Survey: June, 2002  
Shoreline: Landsat 7, August, 2000

Lake Area: 2054 acres      Maximum Depth: 20.6ft  
Mean Depth: 10ft  
Shoreline Development Index: 3.7

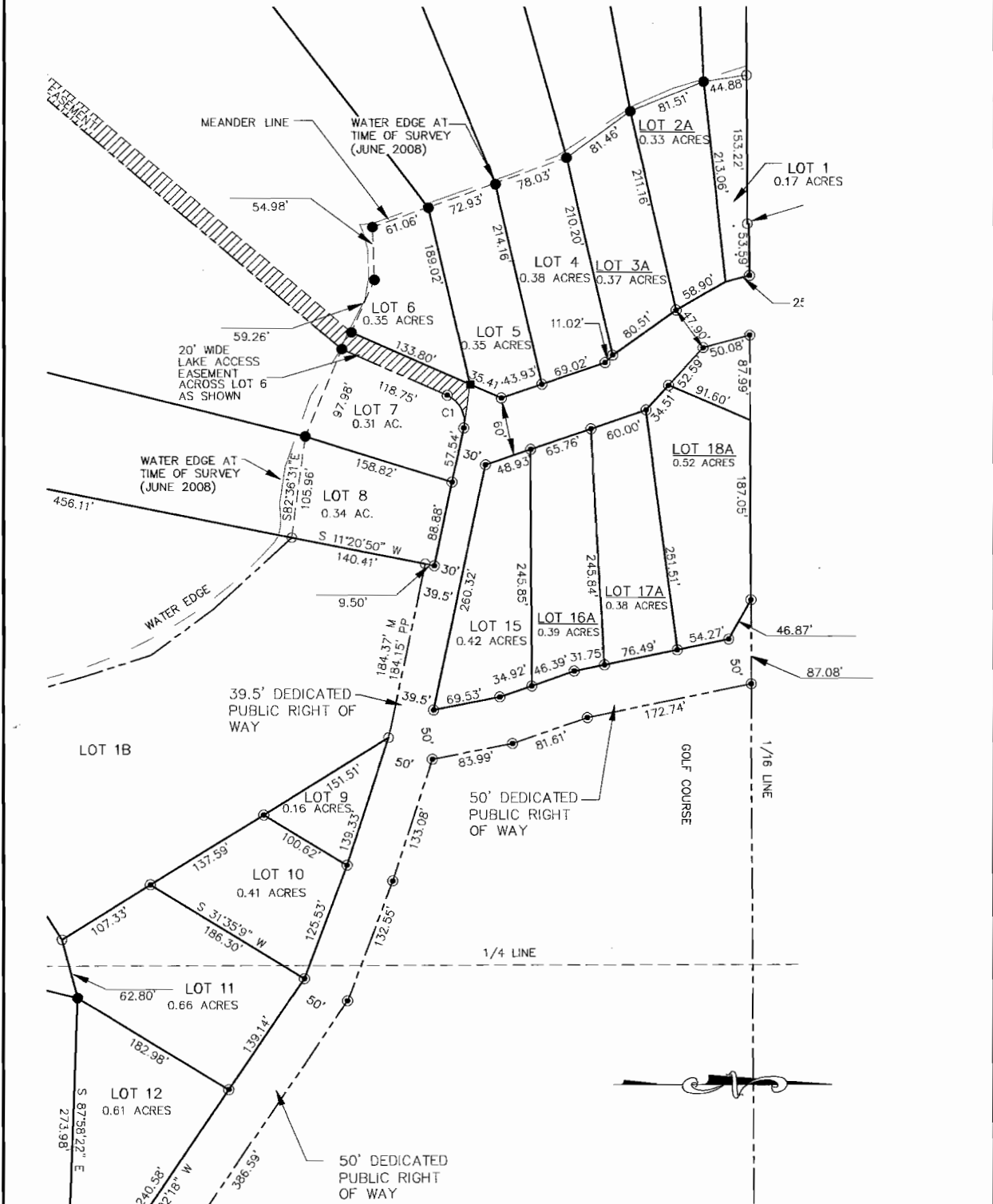


South Dakota Game, Fish, and Parks  
SDSU Wildlife and Fisheries Sciences



**ROYKOTA LEGACY ESTATES**

A-4456



**Helms & Associates**  
 CIVIL ENGINEERS & LAND SURVEYORS  
 221 Brown County Highway 19  
 P.O. Box 111  
 Aberdeen, S.D. 57401  
 Phone: 605.225.1212  
 Fax: 605.225.3189